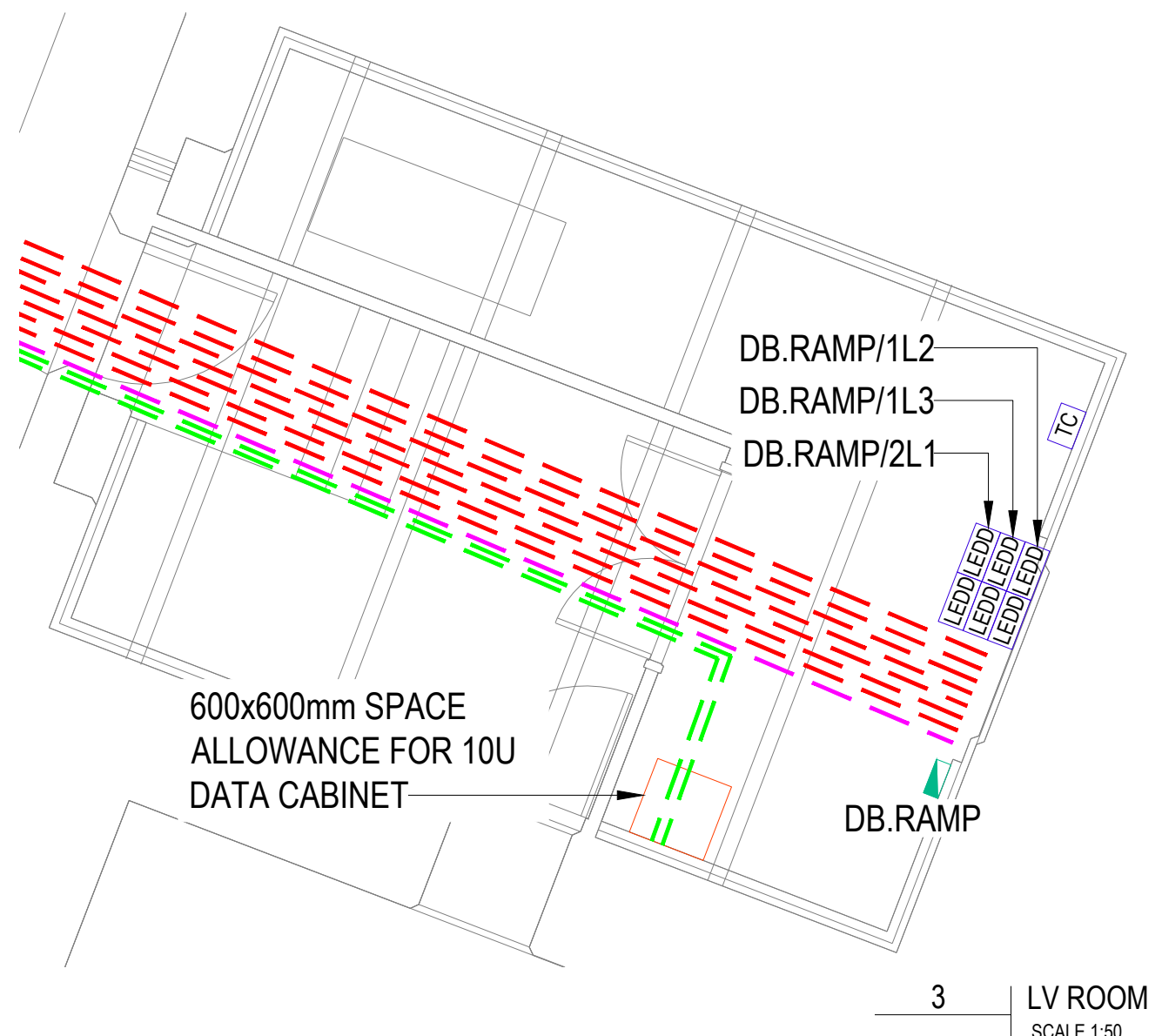
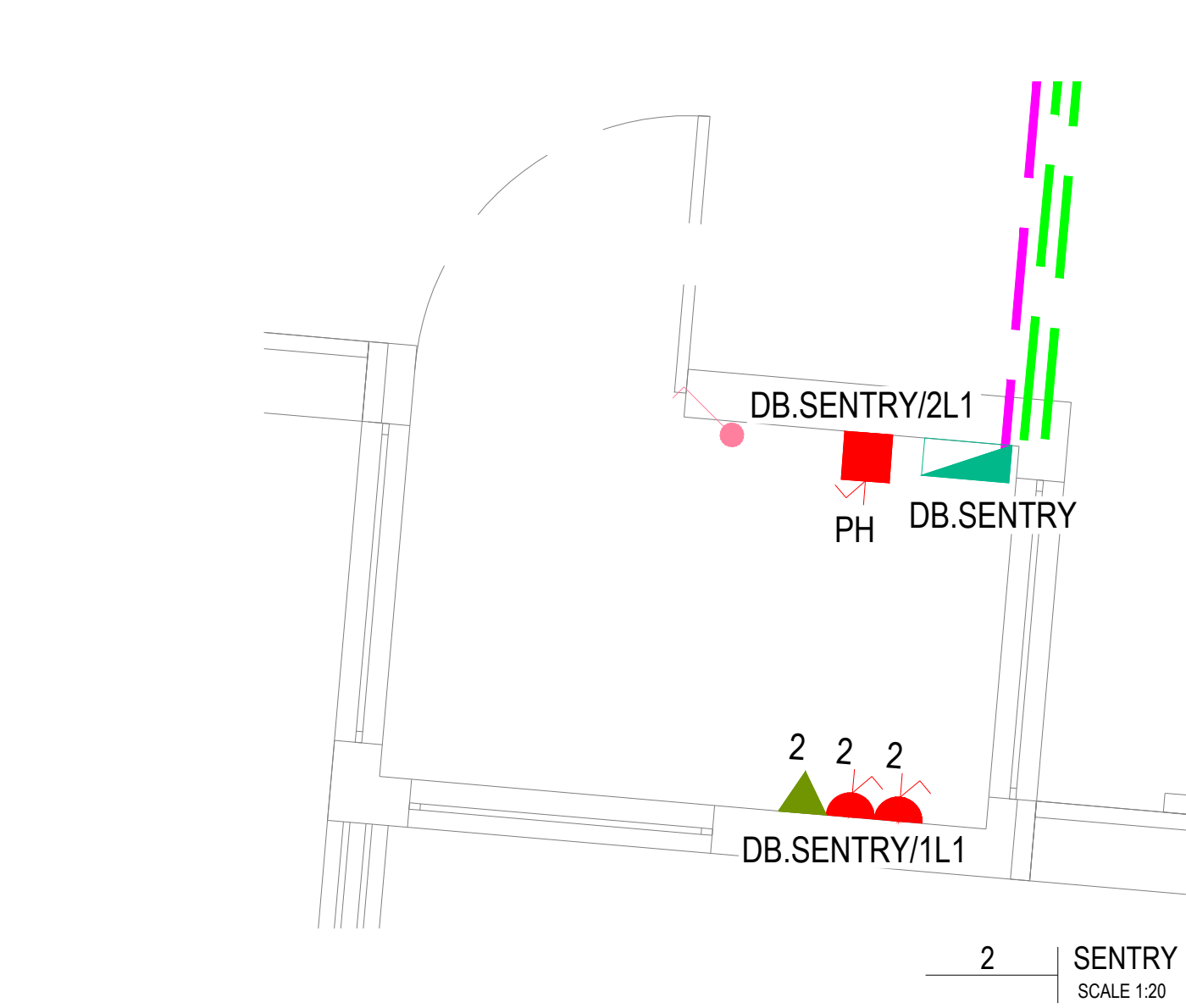


FILENAME: Z:\PROJECTS\313283 - TOL - REVELLER PROJECT\07\HAH DRAWINGS\02 CAD\02 ELECTRICAL\313283-HAH-XX-XX-D-E-06056.DWG | PLOTTED DATE: 29 October 2025 09:36:30

Reference	Cable Type	No. of cores	Nominal cross sectional area mm2	Nominal thickness of insulation mm2	Nominal diameter mm		Protective Device
					Under Armour	Overall	
Type 1	LSZH XLPE SWA CABLE	3	25	0.9	18.9	23.6	40A Type C MCB
Type 2	LSZH XLPE SWA CABLE	7	1.5	0.6	10.2	15.2	Origin LED driver
Type 3	CAT6 U/UTP SWA CABLE	4 (Pairs)	0.57	0.8	7.1	11.2	N/A

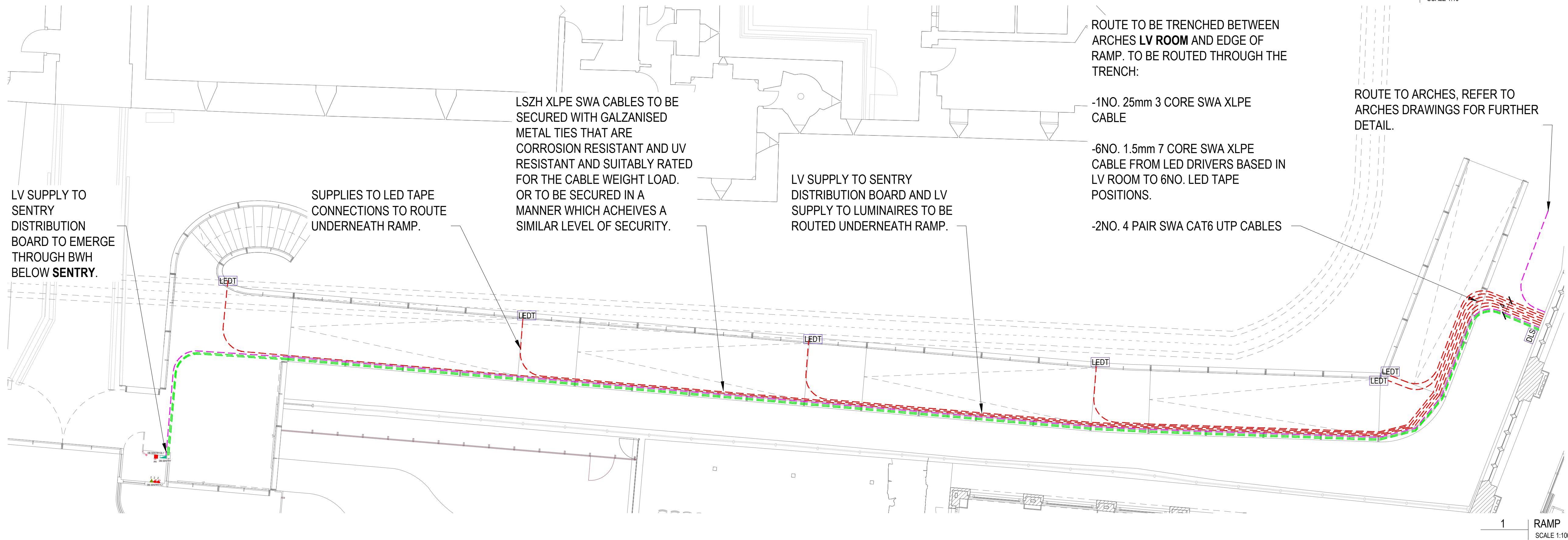
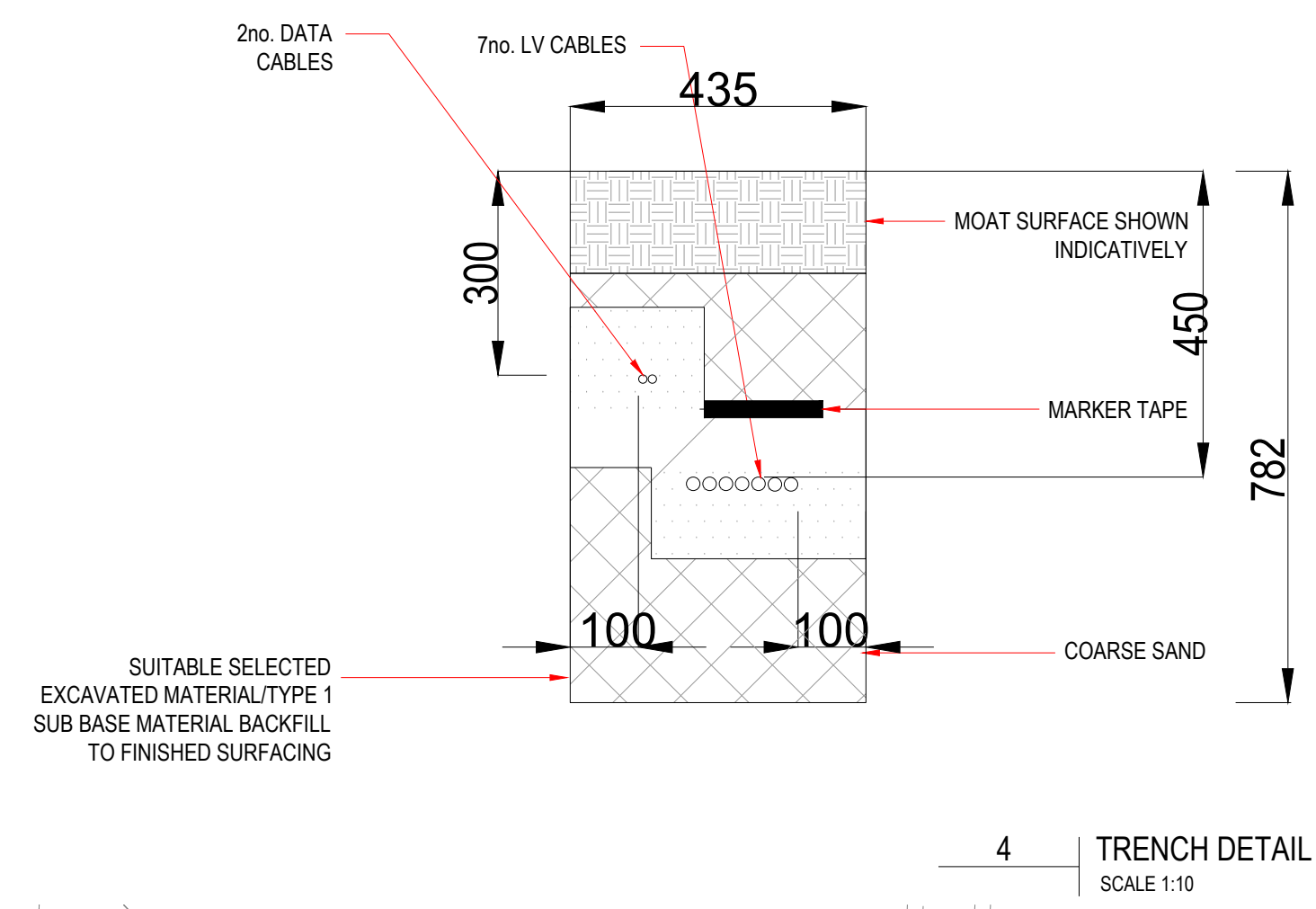
ALL GREYED ITEMS ARE OUTSIDE THE SCOPE OF THIS DRAWING



LEGEND	
	DISTRIBUTION BOARD
	PANEL BOARD
	TPN ISOLATOR
	SPN ISOLATOR
	DOUBLE SWITCH SOCKET OUTLET
	CONNECTION POINT: LOW LEVEL- CABLE OUTLET PLATE HIGH LEVEL- MAINTENANCE FREE JUNCTION BOX
	FUSED CONNECTION UNIT
	SWITCHED FUSED CONNECTION UNIT
	UNSWITCHED SOCKET OUTLET
	LED TAPE TERMINATION
	LED DRIVER
	DAY LIGHT SENSOR
	TIME CLOCK
	RESET BUTTON
	OVERHEAD DOOR LIGHT
	DISABLED PULL CORD
	AV ITEM- REFER TO AV LAYOUTS FOR FURTHER INFORMATION

ABBREVIATIONS	
AD	AUTOMATIC DOOR
AHU	AIR HANDLING UNIT
DAC	DISABLED ALARM CONTROLLER PANEL
DEP	DOOR ENTRY PANEL
DHP	DOOR HOLD PANEL
DW	DISHWASHER
EF	EXTRACT FAN
EH	ELECTRIC HEATER
FCU	FAN COIL UNIT
FR	FRIDGE
HD	HAND DRYER
IL	INDUCTION LOOP
MC	METAL CLAD
MVHR	MECHANICAL VENTILATION WITH HEAT RECOVERY
MW	MICROWAVE
PH	PANEL HEATER
SS	SECURITY SCANNER
VRF	VARIABLE REFRIGERANT FLOW

- THIS DRAWING IS INDICATIVE AND REPRESENTS ONLY THE DESIGN INTENT, THE CONTRACTOR MUST PRODUCE FULLY CO-ORDINATED WORKING / INSTALLATION DRAWINGS AS REFERRED TO IN THE CONTRACT DOCUMENTATION
- NOTES
- DO NOT SCALE FROM THIS DRAWING. ALL DIMENSIONS INDICATED ARE IN MILLIMETRES.
 - THIS IS NOT A CONSTRUCTION DRAWING.
 - ALL ELECTRICAL WORKS SHALL COMPLY WITH 18TH EDITION IET WIRING REGS BS7671:2018/A2 (2022) INCLUDING ALL CURRENT AMENDMENTS AND GUIDANCE NOTES AND THE CURRENT BUILDING STANDARDS REGULATIONS.
 - THE INSTALLATION SHALL ONLY BE CERTIFIED BY A PERSON OR A COMPANY HAVING MEMBERSHIP TO S.E.L.E.C.T. OR N.I.C.E.I.C. OR SIMILAR ELECTRICAL SCHEMES.
 - THIS DRAWING IS NOT TO BE SCALED, FIGURED DIMENSIONS ONLY TO BE TAKEN.
 - ELECTRICAL ACCESSORY POSITIONS ARE INDICATIVE ONLY. ELECTRICAL CONTRACTOR TO REFER TO JFA ARCHITECTS SETTING OUT DRAWINGS FOR EXACT DIMENSIONS / LOCATIONS.
 - CONTRACTOR TO ALLOW FOR COORDINATION OF ALL MECHANICAL AND ELECTRICAL SERVICES THROUGHOUT.
 - CONTRACTOR TO ALLOW FOR SITE COORDINATION WITH OTHER TRADE/SERVICE INSTALLATIONS.
 - ALL FINAL CIRCUIT WIRING TO BE MULTICORE FLEXISHEILD TYPE.
 - SOCKET / DATA OUTLETS TO BE FLUSH MOUNTED THROUGHOUT.
 - SOCKET OUTLET FINISHES TBC BY JFA ARCHITECTS.
 - SOCKET OUTLETS TO ALL PLANT / STORE SPACES TO BE SURFACE MOUNTED METAL CLAD.
 - ALL ELECTRICAL OUTLETS TO BE FULLY AGREED / SIGNED OFF BY JFA ARCHITECTS PRIOR TO INSTALLATION.
 - ALL CABLE / TV / DATA OUTLETS THROUGHOUT TO MATCH OUTLET FINISH WITHIN GIVEN SPACE.
 - ALL FINAL WAP LOCATIONS TO BE CONFIRMED WITH AV SPECIALIST. ACCESS POINTS & ASSOCIATED POWER SERVICES TO BE CEILING MOUNTED.
 - ACCESSORY PLATES WITHIN THE KITCHEN SHALL BE ENGRAVED WITH THE NAME OF EQUIPMENT SERVED (5mm BLACK LETTERING).
 - THE ELECTRICAL CONTRACTOR SHALL ENSURE THAT SOCKET OUTLETS ETC. ARE NOT INSTALLED BACK TO BACK TO ENSURE THE ACOUSTIC INTEGRITY OF THE WALLS BETWEEN THEM IS MAINTAINED.
 - EVERY SERVICE, FITTING AND PIECE OF EQUIPMENT IS PROVIDED SO AS TO SERVE A PURPOSE OF THE BUILDING REGULATIONS AND IS TO BE DESIGNED, INSTALLED AND COMMISSIONED IN SUCH A WAY TO FULFIL THOSE PURPOSES.
 - ELECTRICAL CONTRACTOR TO ALLOW FOR INSTALLING, TESTING & COMMISSIONING OF ALL ACCESSORIES. THEN REMOVAL TO ALLOW FOR FINAL DECORATION.
 - POWER SUPPLIES FOR ALL MECHANICAL PLANT ARE SUBJECT TO CHANGE. REFER TO MECHANICAL LAYOUTS FOR DETAILS.
 - THIS DRAWING DOES NOT REMOVE THE CONTRACTORS RESPONSIBILITY TO:
 - PRODUCE THEIR OWN WORKING DRAWINGS.
 - TAKE ALL SITE DIMENSIONS AS REQUIRED.
 - COORDINATE WITH OTHER SERVICES AND THE BUILDING STRUCTURE



P04 DRAFT TENDER ISSUE	TG	JR	A3	29.10.25
P03 STAGE 4B UPDATE	TG	JR	A3	18.07.25
P02 STAGE 4B ISSUE	TG	JR	A3	13.06.25
P01 PRELIMINARY ISSUE	TG	JR	A3	22.05.25
REV DESCRIPTION	BY	CHK	APP	DATE

Project Status: **DRAFT TENDER ISSUE**

ENGINEERING POWERED BY THE PAST
BUILDING THE FUTURE

Unit A2, Hatchers Yard
9 Tanner Street
London, SE1 3LE
T 44 (0) 203 755 5960
www.harleyhaddow.com

Project: 313293
**TOWER OF LONDON
REVELLER**

Drawing Title:
**RAMP
LV SERVICES & DATA
LAYOUT**

Scale @ A1	Date	Engineer
SEE VIEW	MAY 2025	JR

Drawing No.	Revision
313293-HAH-XX-XX-D-E-06056	P04